



Ridge Creek Fire

Idaho Panhandle National Forests, Coeur d'Alene River Ranger District
Fire Information 208-557-8813

<https://inciweb.nwcg.gov/incident-information/idipf-ridge-creek>

August 4, 2023

Location: Approximately 3.5 miles east of the north tip of Hayden Lake, along the Hayden Creek Road (FSR 437) in the Ridge Creek drainage

Start Date: 8/3/2023 **Cause:** Under Investigation **Size:** 300-400 acres **Containment:** 0%

Total Personnel: 50 **Engines:** 3 **Dozers:** 2 **Hand Crews:** 1

A Type 3 Incident Management Team will take command of the fire at 6 AM tomorrow morning. The fire is burning in snags and dense vegetation, making construction of handline difficult. Crews have anchored off FSR437 and are working on the west side of the Ridge Creek drainage. Fire activity is most active on the eastern flank, in Hells Canyon, creating spot fires that have filled in. Air resources from Missoula and Coeur d'Alene assisted during much of the day. The fire is estimated at 300-400 acres; an IR flight tonight will confirm the exact acreage.

Fire managers and Kootenai County Emergency Management continue to assess the situation and will update the status as warranted. Follow Kootenai County Emergency Management Facebook Page for updates and sign up for automated Kootenai Alert for emergency alerts. <https://www.kcsheriff.com/186/Emergency-Management>

EVACUATION STATUS

There have been no changes to this notification since last update. A message from the Kootenai County Emergency Management: Out of an abundance of caution, residents within the boundary (see attached map) are being provided with a **GET READY** notification. The Ridge Creek Fire is in your area and it would be wise to consider planning and or packing in the event an evacuation becomes necessary.

Residents are urged to create and maintain a defensible space and harden their home against the potential for wildfire. More information will be forthcoming, as it becomes available. Please continue to monitor official sources and call 208-446-2292 for any questions regarding evacuations.

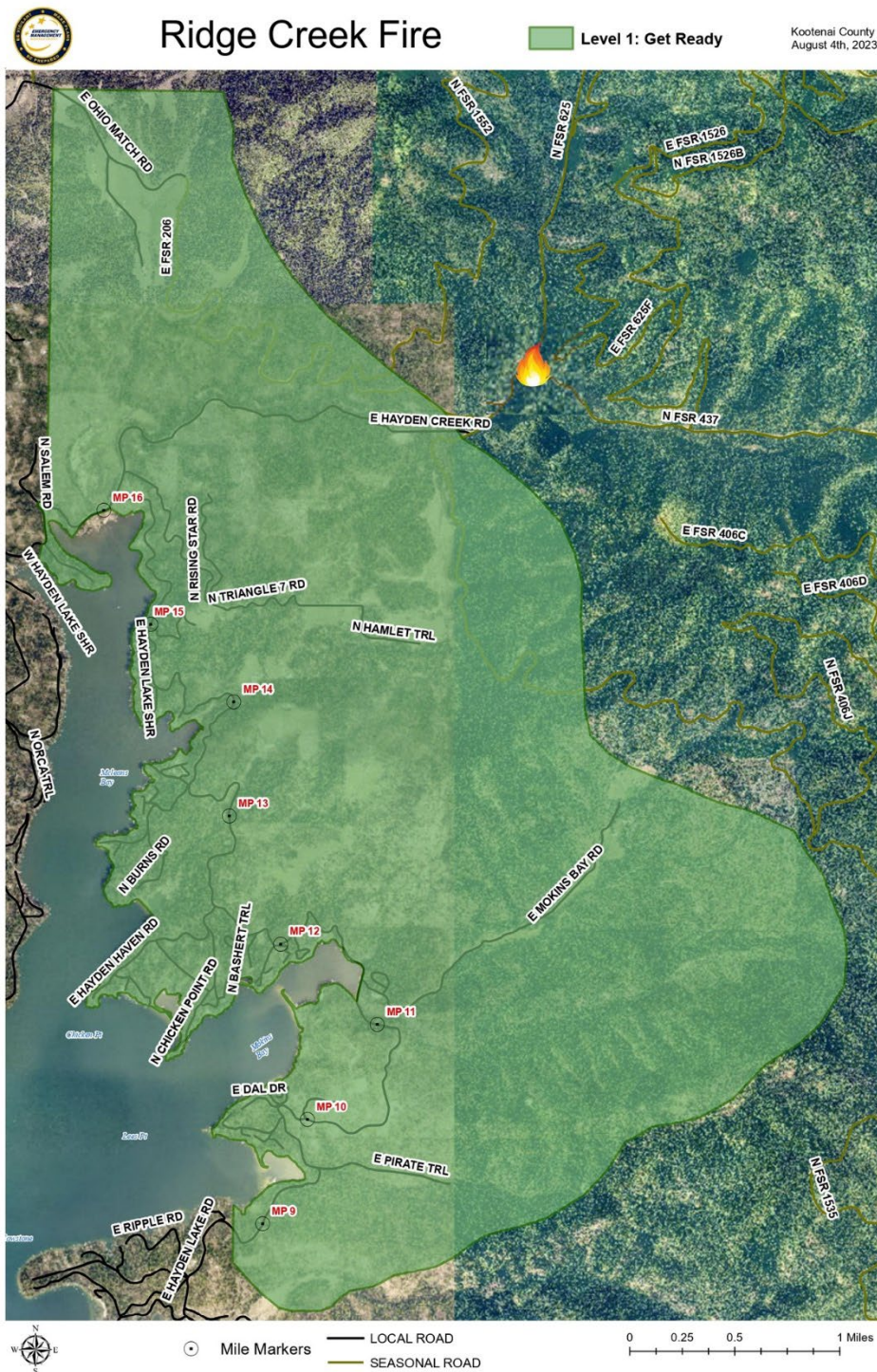
CLOSURES AND SPECIAL MESSAGES

The Idaho Panhandle National Forests issued an emergency closure (Closure Order #01-04-03-23-002) effective August 4, 2023. This Order is for public and firefighter safety due to heavy fire traffic on the area impacted on the Coeur d'Alene River Ranger District, and prohibits all methods of travel (foot, mechanized, motorized and stock) on Forest Service Roads 392, 428A, 437, 1511, 1530, 1552, 1587 and Forest Service Roads 206 and 406 north of their junction, Forest Service Trails 69, 78, 234, and 802 as well as within the described area.

Kootenai County Sheriff Office is advising Hayden Lake residents and all boaters to stay off the open water of Hayden Lake so firefighting aircraft can safely operate. Public access boat launches are closed. Please keep all boats off Hayden Lake until further notice. Thank you for your cooperation.

WEATHER AND FIRE BEHAVIOR

Southwest winds at 7 mph tonight. Minimum RH of 23 percent. A 20 percent chance of showers and thunderstorms after 2 AM. Widespread haze throughout the day. Tonight, will be mostly cloudy, with a low around 65.





Idaho Panhandle National Forests



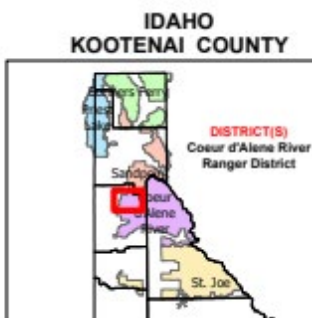
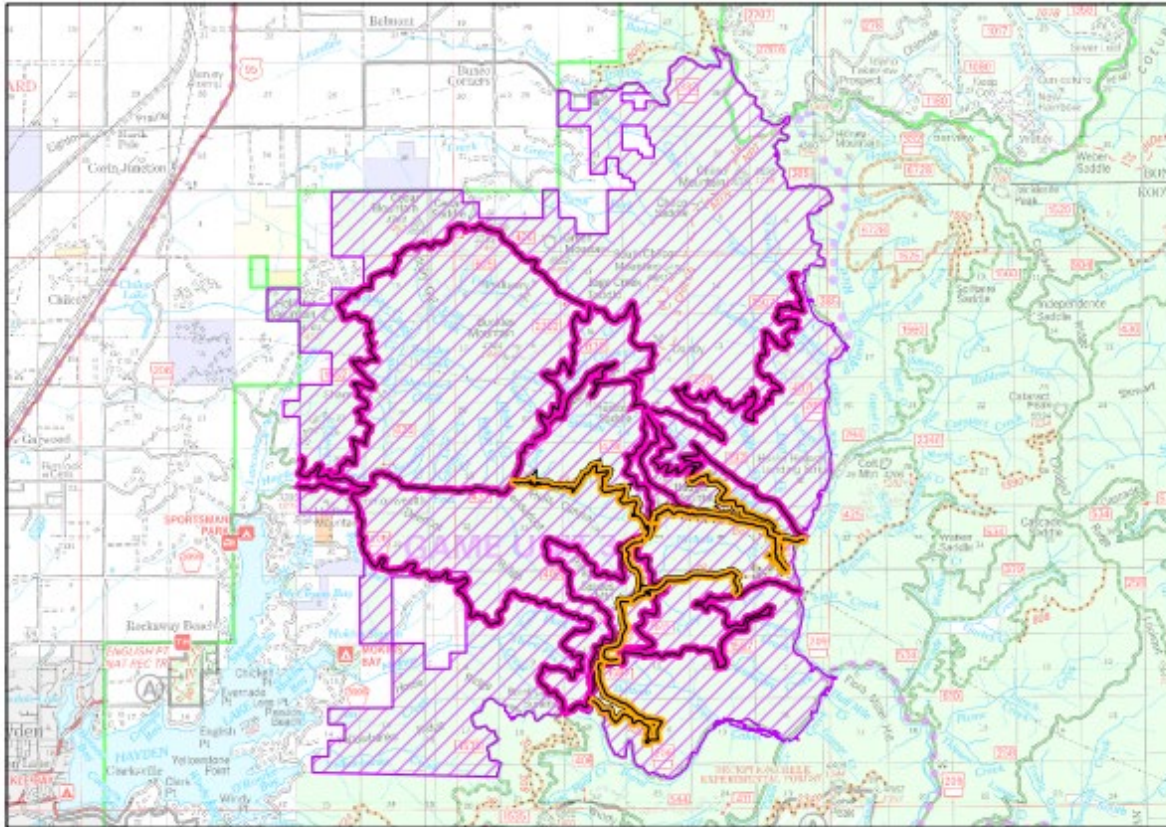
Forest Closure: Ridge Creek Fire Closure

Order Number: 01-04-03-23-002

Effective Date : AUGUST 4th, 2023

Rescind Date : SEPTEMBER 30th, 2023

Exhibit A



Closed Road
Numbers:

-206
-392
-406
-428A
-437
-1511
-1530
-1552
-1587

Closed Trail
Numbers:

-69
-78
-234
-802

Closures

— Road
— Trail
— Area

